

PLAT SHOWING HOWLING WOODS SUBDIVISION

IN THE SW1/4 OF SECTION 22,
TOWNSHIP 123 NORTH, RANGE 64 WEST OF THE 5th P.M., BROWN COUNTY, SOUTH DAKOTA

W1/4 Cor. Sec. 22-123-64
(**FOUND** Pin w/Cap LS4423)
N = 593693.23
E = 2344050.80

HOWLING WOODS LANE
HOWLING WOODS LANE DEDICATED PUBLIC
RIGHT-OF-WAY WITH PRIVATE MAINTENANCE
BY ESTABLISHED HOA ON LOTS 1-16

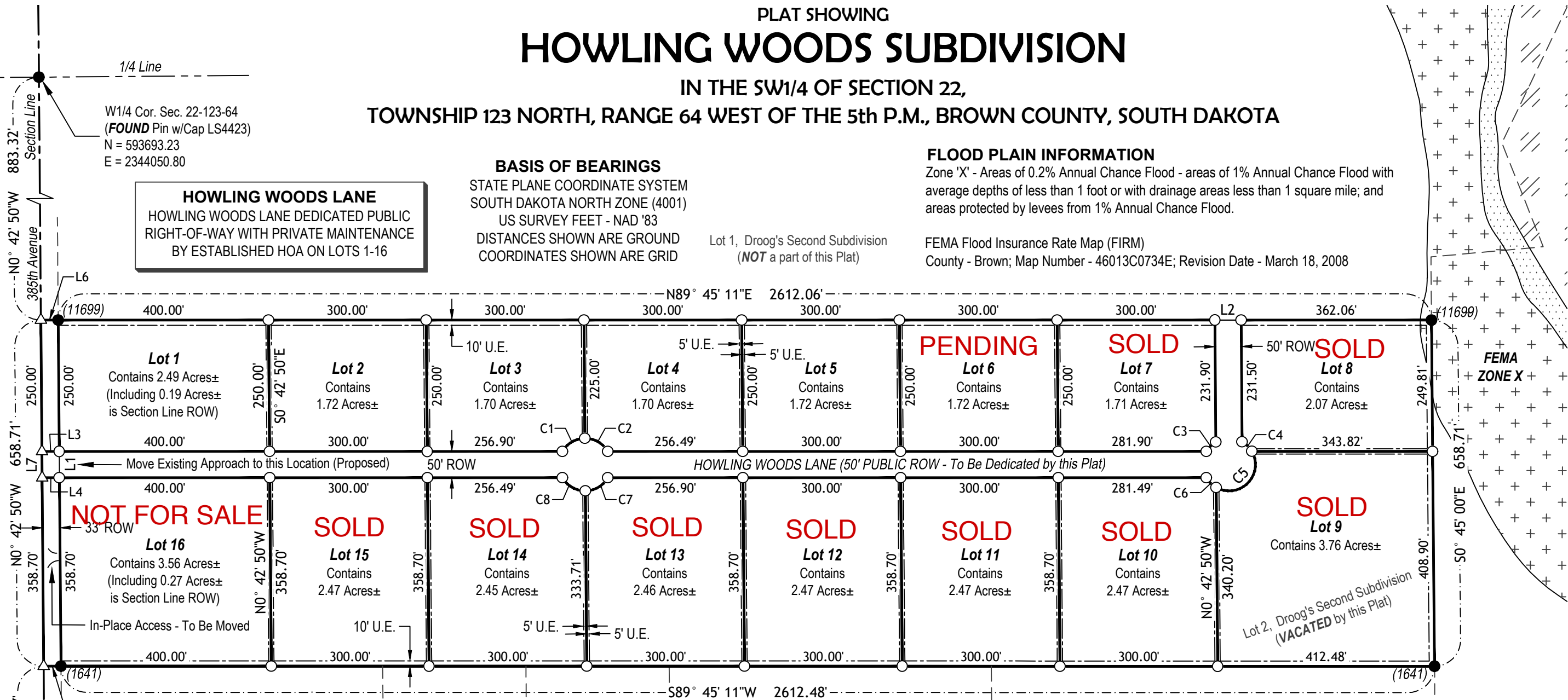
BASIS OF BEARINGS
STATE PLANE COORDINATE SYSTEM
SOUTH DAKOTA NORTH ZONE (4001)
US SURVEY FEET - NAD '83
DISTANCES SHOWN ARE GROUND
COORDINATES SHOWN ARE GRID

Lot 1, Droog's Second Subdivision
(**NOT** a part of this Plat)

FLOOD PLAIN INFORMATION

Zone 'X' - Areas of 0.2% Annual Chance Flood - areas of 1% Annual Chance Flood with average depths of less than 1 foot or with drainage areas less than 1 square mile; and areas protected by levees from 1% Annual Chance Flood.

FEMA Flood Insurance Rate Map (FIRM)
County - Brown; Map Number - 46013C0734E; Revision Date - March 18, 2008



NOT FOR SALE

PENDING

SOLD

SOLD

SOLD

SOLD

SOLD

SOLD

SOLD

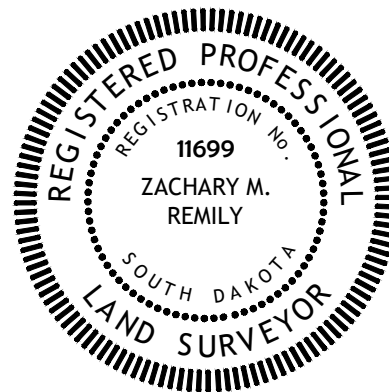
SOLD

SOLD

FEMA
ZONE X

LEGEND

- PIN FOUND (AS NOTED)
- PIN SET w/CAP LS 11699
- △ CALCULATED CORNER
- U.E. UTILITY EASEMENTS (TYP.) - AS SHOWN (10' REAR - 5' SIDE)



LINE TABLE		
#	BEARING	DISTANCE
L1	N0°42'50"W	50.00'
L2	N89°45'11"E	50.00'
L3	S89°45'11"W	33.00'
L4	N89°45'11"E	33.00'
L5	S89°45'11"W	33.00'
L6	N89°45'11"E	33.00'
L7	N0°42'50"W	50.00'

CURVE TABLE					
#	LENGTH	RADIUS	DELTA ANGLE	Ch	CL
C1	51.95'	50.00'	59°31'59"	S59°31'10"W	49.65'
C2	52.77'	50.00'	60°28'01"	N60°28'50"W	50.35'
C3	25.77'	50.00'	29°32'03"	S44°31'12"W	25.49'
C4	26.36'	50.00'	30°12'42"	N45°36'33"W	26.06'
C5	130.71'	50.00'	149°47'18"	N44°23'27"E	96.54'
C6	26.59'	50.00'	30°28'05"	S45°28'52"E	26.28'
C7	51.95'	50.00'	59°31'59"	N59°31'10"E	49.65'
C8	52.77'	50.00'	60°28'01"	S60°28'50"E	50.35'



Prepared By:

619 14th Avenue S, Faulkton, South Dakota 57438
Phone: 605-290-3090 / Email: zach@assurancelandsurveying.com
Project No. ALS24012B Field Survey Date: 02-13-2024



NORTH
SHEET 1 OF 3